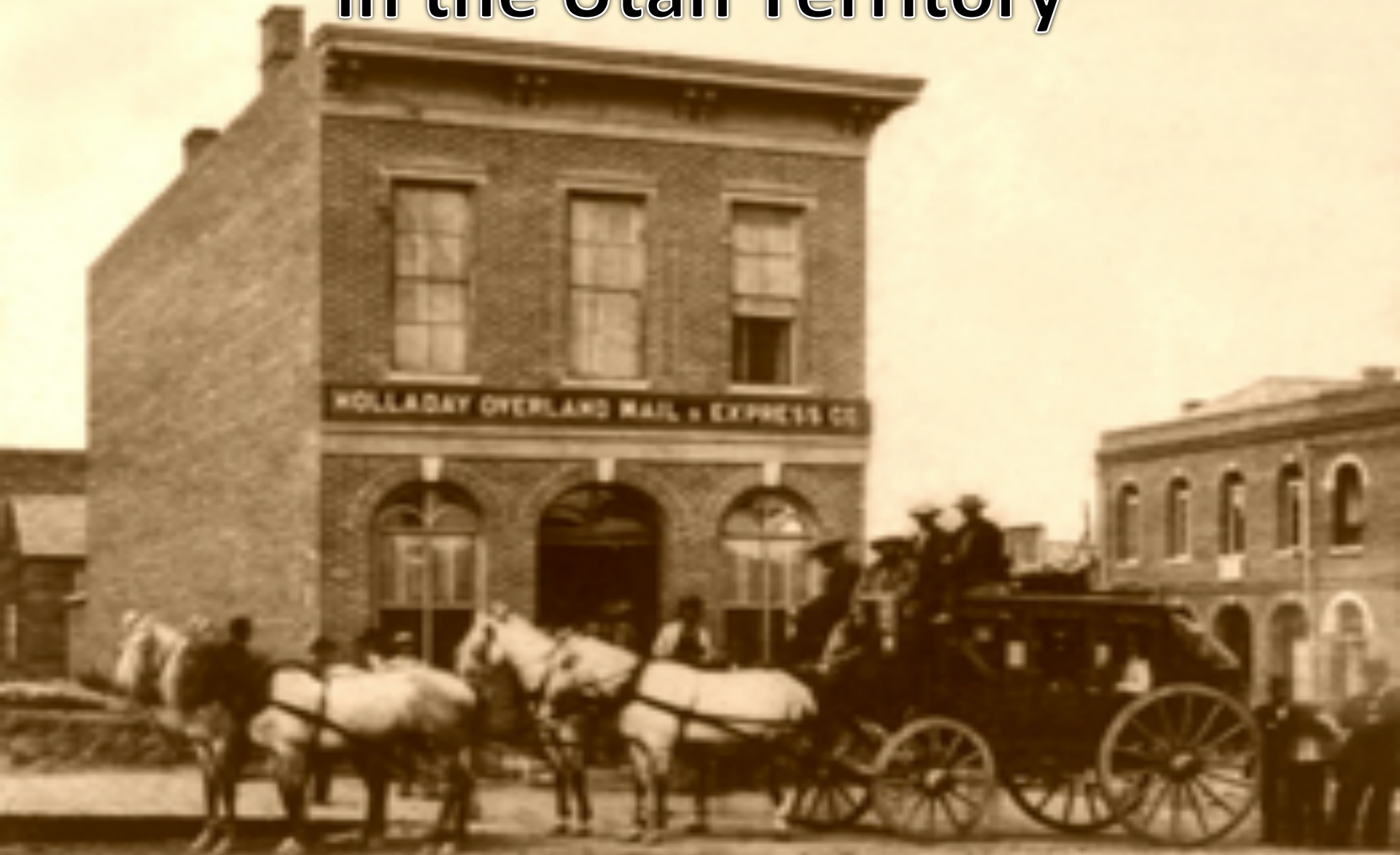


Growth, Prosperity, and Change in the Utah Territory



Changing Methods of Transportation Shaped the way Utah Developed

- **Freighting (large scale shipping) companies** traditionally used wagons drawn by mules, oxen, or horses to ship goods
 - Very Slow: sometimes taking several months to get products to market
 - Risky: Storms, Bandits, Indian Raids, Flash Floods, and other dangers threatened the cargo
 - Expensive: Due to the above mentioned risks, costs were high
- **Wells Fargo** and **American Express**: began by offering banking and express (rapid) shipping of valuable goods to the west

Changing Methods of Transportation Shaped the way Utah Developed

- People, new, and the mail were most commonly transported using **stagecoaches**
 - A. J. Oliver & Co's Bannack & Salt Lake Express (1862-1866)
Banack Montana to Salt Lake City Utah
 - Alexander & Banning Stage Line (1830-1885) Los Angeles CA to Salt Lake City Utah
 - Butterfield Overland Dispatch (1865-1870) Atchison Kansas to Denver Colorado
 - Holladay Overland Mail and Express Company (1865)



Pony Express

- Founded as part of the **Overland Mail and Express Company** in 1860
- Became known as the **Pony Express** for their use of a series of horse relays that allowed them to deliver messages from Missouri to California in, a journey of 1800 miles in 10 days!



New Technology

- The Pony express only operated for 18 months before they were put out of business by a new method of communication The Telegraph

The Telegraph: a system of transmitting messages using a series of electronic signals along wires



New Technology

- Another new technology that changed the way people and goods moved throughout the west was the **Railroad** and **Steam Engine**

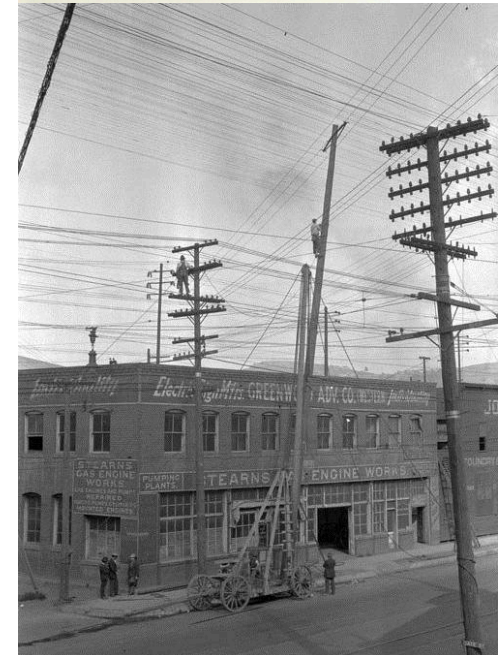


Transcontinental Railroad

- The **Union Pacific Railroad** started building west from Omaha Nebraska in 1869
- The **Central Pacific Railroad** began building East from Sacramento California at the same time
- The two Railroads joined together at **Promontory Summit, Utah on May 10th 1869**
 - Linked the country allowing the movement of people faster and farther than ever before
 - Revolutionized almost every industry making it cheaper and easier to market products to the people

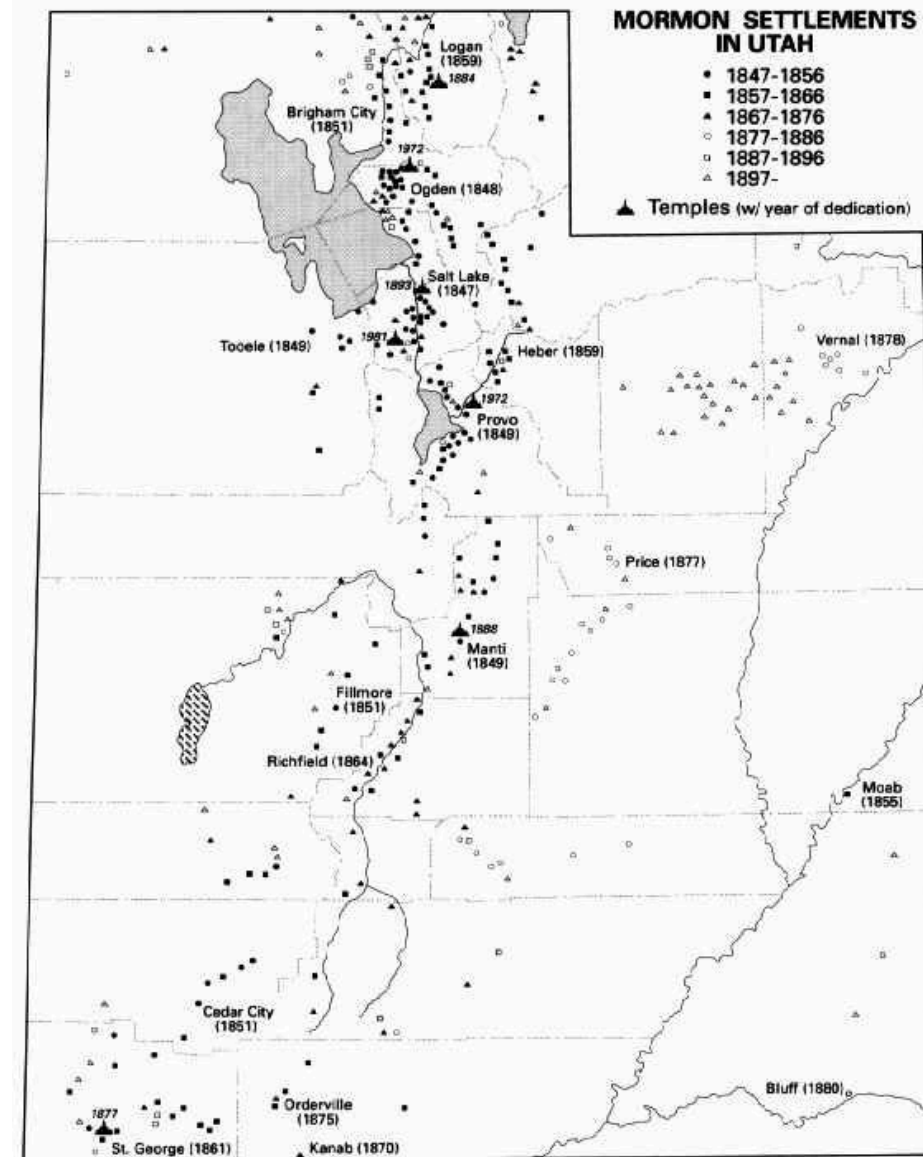
New Technology

- Other new technologies further changed society in Utah and the west
 - In 1879 the first telephones were installed in Utah
 - 1881 Salt Lake City Light, Heat, and Power Company started offering electric power



Continued Growth

- Through out the 1800's Mormons continued to settle other parts of the Territory
- Catholic and Protestant groups also continued to grow in some areas



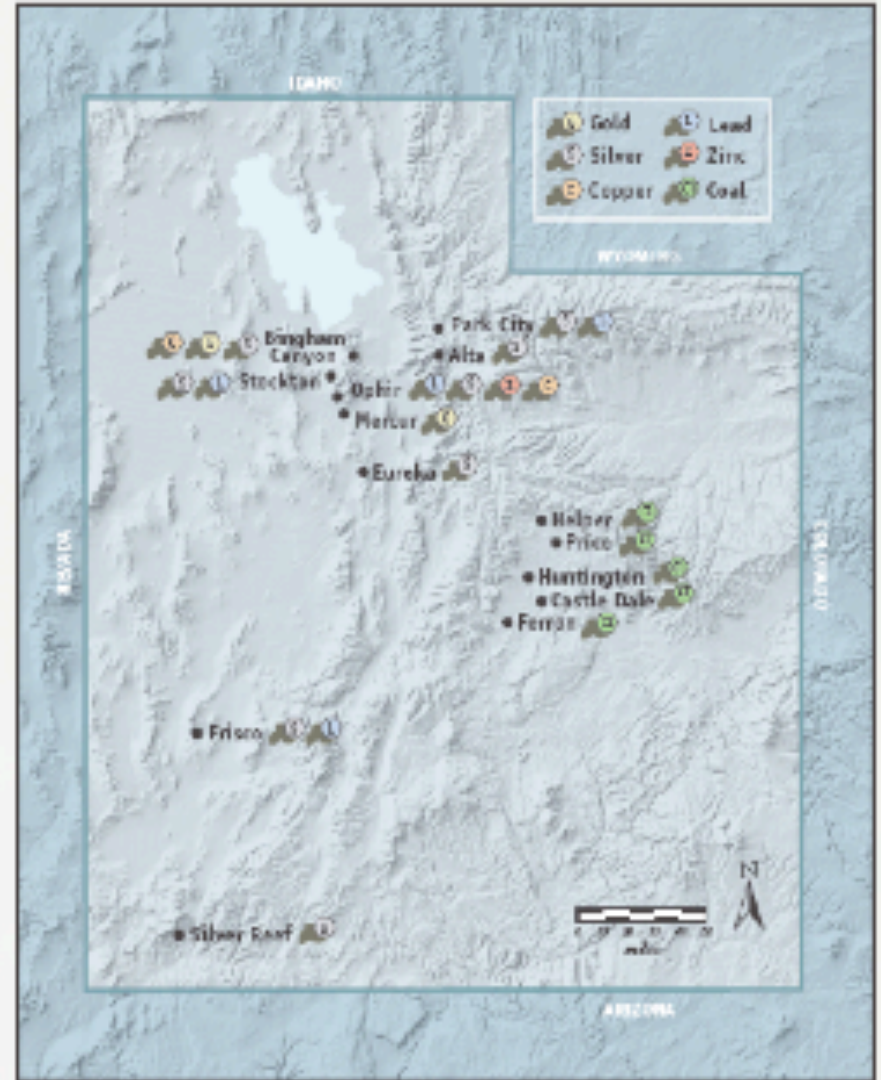
Continued Growth

- Many Territorial schools were established to help educate the people of Utah

School	Location	Founding	Who Started it
University of Deseret (U of U)	Salt Lake City	1850	Utah Government
Timpanogos University (Brigham Young Academy, then BYU)	Provo	1874	Utah Government, then the LDS Church
Salt Lake Collegiate Institute (Westminster College)	Salt Lake City	1875	Presbyterian Church
Agricultural College of Utah (Utah State University)	Logan	1888	Utah Government
Dixie Academy (Dixie State University)	St. George	1888	LDS Church
Snow Academy (Snow College)	Ephraim	1888	LDS Church
Weber Academy (Weber State College, then Weber State University)	Ogden	1889	LDS Church
Branch Normal School (College of Southern Utah, then Southern Utah University)	Cedar City	1897	Utah Government

Mining of Minerals and Metals

- Throughout the late 1800's and early 1900's Mineral and **Metal Ore** mining became a large part of Utah's economy.
- Copper, Iron, Lead, and Coal became the most widely produced ores
- Gold and Silver were being mined as well



Changes to Business

- Mormon Cooperative companies were started as a means of providing a way for Mormon settlers to purchase the goods they needed
 - Zion Mercantile Cooperative Institution

America's first department Store offering a variety of Different goods.

These companies later
Later grew to sell goods
Across the country



Clothing Industry



- Wool from sheep was used to make clothing
- Utah's first factory produced wool cloth near the Provo River
- Women and children were encouraged to raise silk worms
- A Cotton cloth factory was also established in Washington County



- Improved technology led to increased use of resources and the continuation of population growth in Utah
- This allowed Utah to grow into the modern prosperous state it is today.

